

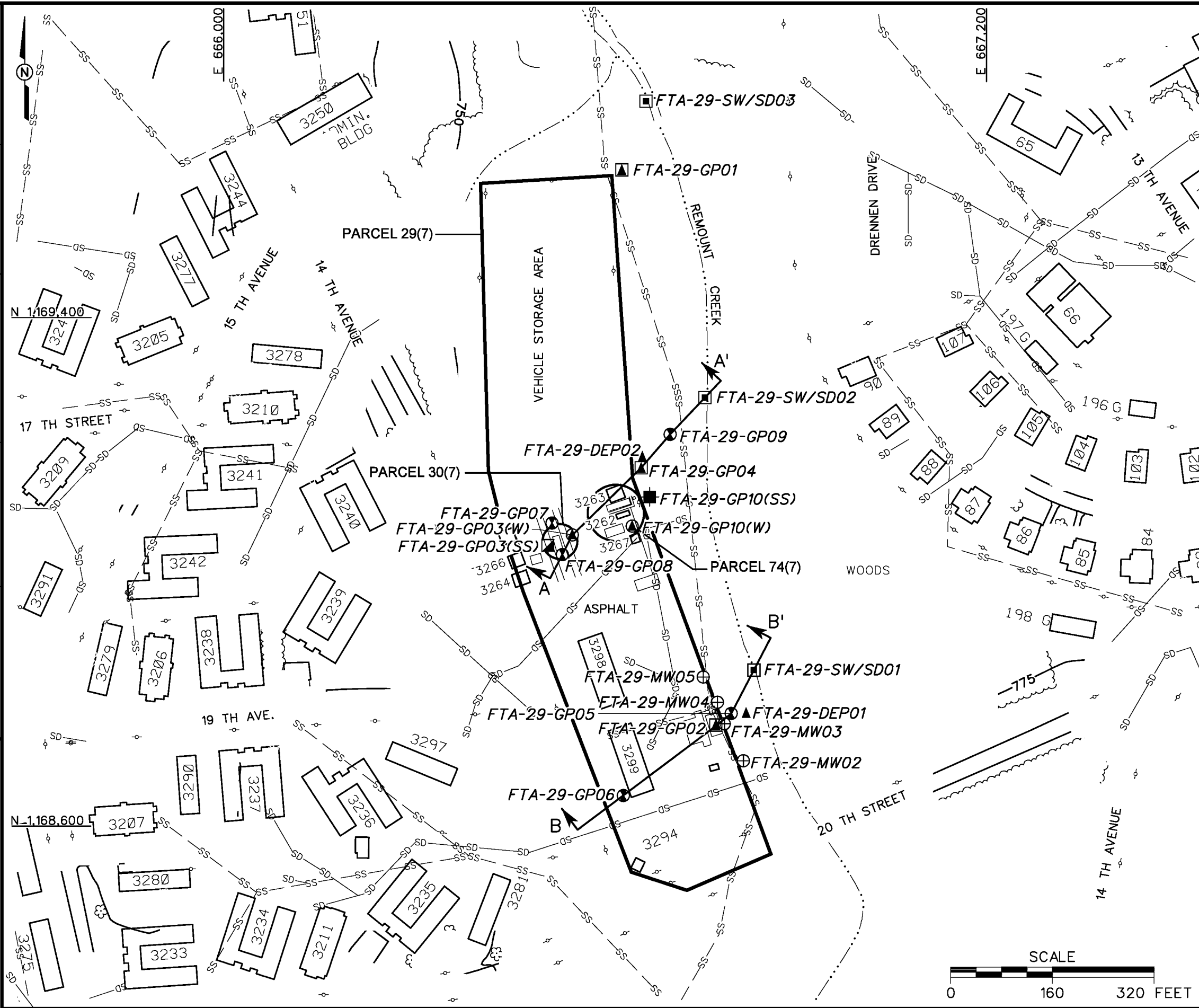
12/14/00
02:59:40
c:\cadd\design\774645es.360
aw smith

STARTING DATE: 09/01/99
DATE LAST REV.:
DRAWN BY: D. BILLINGSLEY

DRAFT, CHECK, BY:
ENGR. CHECK, BY: J. JENKINS

INITIATOR: J. JENKINS
PROJ. MGR.: J. YACOB

DWG. NO.: 774645es.360
PROJ. NO.: 774645



- LEGEND**
- UNIMPROVED ROADS AND PARKING
 - PAVED ROADS AND PARKING
 - BUILDING
 - TOPOGRAPHIC CONTOURS (CONTOUR INTERVAL - 25 FOOT)
 - TREES / TREELINE
 - PARCEL BOUNDARY
 - SURFACE DRAINAGE / CREEK
 - FENCE
 - UTILITY POLE
 - SANITARY SEWER LINE
 - STORM DRAINAGE LINE
 - RESIDUUM GROUNDWATER MONITORING WELL LOCATION
 - SURFACE WATER/SEDIMENT SAMPLE LOCATION
 - GROUNDWATER SAMPLE LOCATION
 - SURFACE AND SUBSURFACE SOIL SAMPLE LOCATION
 - SUBSURFACE SOIL SAMPLE LOCATION
 - GROUNDWATER, SURFACE AND SUBSURFACE SOIL SAMPLE LOCATION
 - GROUNDWATER AND SUBSURFACE SOIL SAMPLE LOCATION
 - DEPOSITIONAL SOIL SAMPLE LOCATION
 - CROSS SECTION LOCATION

FIGURE 3-1
SAMPLE LOCATION MAP
11th CHEMICAL MOTOR POOL AREA
PARCELS 29(7), 30(7), AND 74(7)

U. S. ARMY CORPS OF ENGINEERS
MOBILE DISTRICT
FORT McCLELLAN
CALHOUN COUNTY, ALABAMA
Contract No. DACA21-96-D-0018

IT CORPORATION
A Member of The IT Group